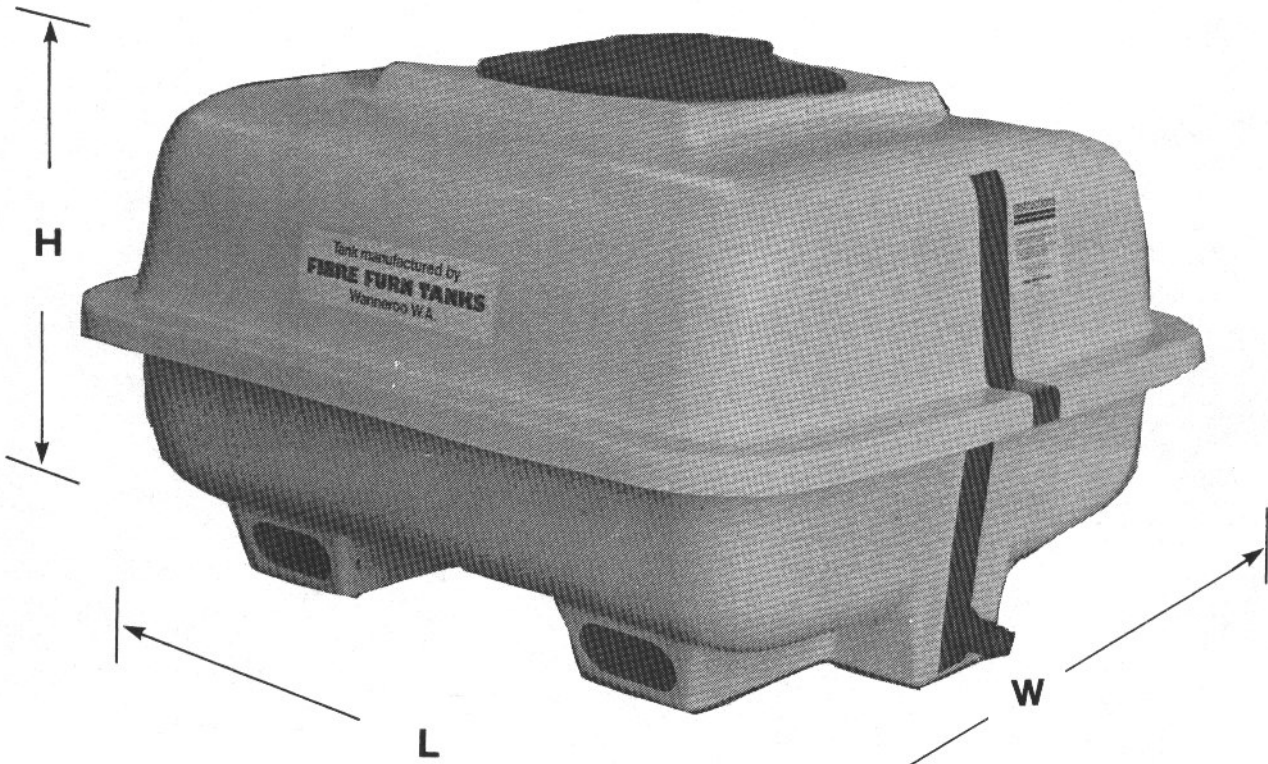
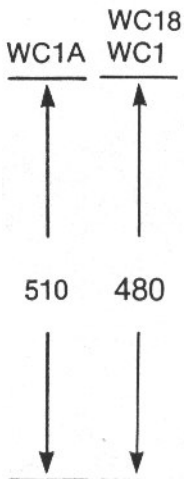
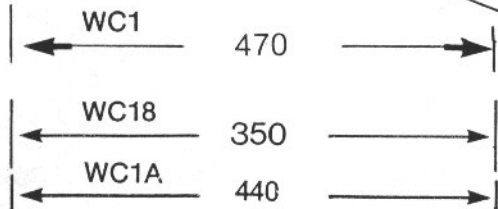


CARTAGE TANK

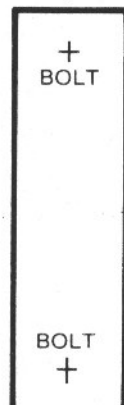
(100 LITRES - 22 GALLONS)
(200 LITRES - 44 GALLONS)



BRASS OUTLET
19mm/25mm



**MOUNTING
BASE**



Code No. WC18
100 Litres
H — 500
L — 700
W — 700

Code No. WC1
200 Litres
H — 620
L — 840
W — 710
Old Style

Code No. WC1A
200 Litres
H — 550
L — 900
W — 850
New Style

110